

# PURELL® CX10™-P OR CX10™-M TOUCH-FREE COUNTER-MOUNT DISPENSER INSTALLATION INSTRUCTIONS



These instructions apply to the PURELL CX10™-P or CX10™-M dispenser.  
Please carefully read all instructions before installing and using the dispenser.

## A If there is a Non-GOJO CXI or CXT model dispenser already installed

1. Remove the existing unit, both the above- and below-counter assemblies
2. Clean the counter where the previous dispenser was located
3. Verify the size of the existing counter hole is 15/16" to 1-1/4" in diameter
4. If there is a GOJO CXT or CXI legacy dispenser spout installed already, skip to Section B Step 4

## If there is no hole in the counter

1. Prior to drilling, examine below counter to ensure adequate clearance for the new unit
2. Drill a 1" diameter hole in the counter top
3. The hole can be drilled to either the right or left of the faucet, ensuring adequate clearance for the below-counter assembly
4. Clean the counter area where the hole is located

## B Installing the CX10™-P or CX10™-M Touch-Free Counter-Mount System

Look beneath the cabinet to find a suitable place to mount the E-cab and battery box so that it will not interfere with system components or plumbing. **Note:** Do not install in locations where dispensers may be exposed to wet environments such as showers or areas where walls are washed down.



**CX10-P spout:** Remove the paper liner from the bottom of the adhesive gasket to expose the adhesive.

**CX10-M spout:** Utilizes a pressure gasket without adhesive. Skip to Step 2.



Feed the data cable and the stem of the dispenser spout through the hole in the countertop. Point the spout of the dispenser into the sink bowl. CX10-M spout, skip to Step 3. CX10-P spout, press down firmly on the dispenser spout to securely attach it to the countertop.



From underneath the counter, feed the lock washer or brass washer and then the mounting nut over the data cable and onto the threaded stem of the dispenser spout. Be sure that the washer will touch the bottom of the countertop and that the nut threads easily onto the stem. (If the nut is hard to turn by hand, it is upside down.) Tighten the nut securely.

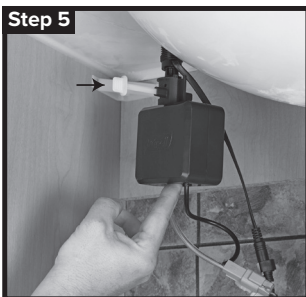


Feed the tube of the Pump Pod™ through the bottom of the stem. Align the indent of the stem to the indent of the Pump Pod™ until it is firmly seated over the base of the stem.

**Note:** Continue pushing until the horizontal slots in the Pump Pod™ line up with the slots of the stem.

Check that the soap tube is slightly visible through the end of the above-counter soap spout. If tube extends too far, scissors can be used to trim.

## C Installation with Wall Fasteners



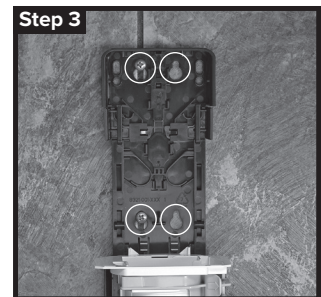
Secure the Pump Pod™ support to the dispenser stem by pushing the retaining clip into place through the horizontal slots, until it goes all the way through the Pump Pod™.



Open dispenser by pressing release buttons on sides of dispenser and slide the front cover down. Remove back plate.



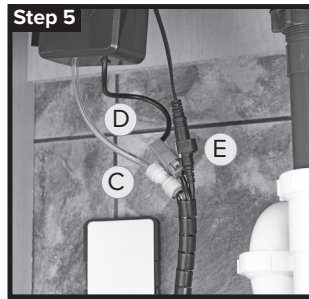
Install dispenser with at least 3" of free space above the cabinet, 1.5" on either side, and 6" below the closed cabinet to ensure functionality.



Using the dispenser as a template, mark and drill at least two holes using a 1/4" drill bit. Use supplied wall anchor and #10 1" screws to secure dispenser in place. Do not overtighten. It is recommended to use 2 screws to attach the E-cab. On surfaces like tile, try to use the grout line. Recommended holes shown.



Attach the back plate by first (A) pressing on the top 2 corners and then (B) on bottom middle section. Audible clicks will confirm proper installation.

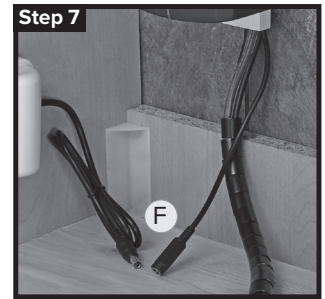


Ensure all three lines are connected—the clear tubing (C), the motor cable (D), and the data cable (E).

The black indicators on the clear tubing should not be visible when fully inserted into push-fit connector. The white indicators on both ends of the data cable should be aligned.



Position the battery box on a convenient (vertical or horizontal) surface under the countertop. Attach to the surface using the exposed holes to the sides of the box and two screws and anchors (if attaching to plaster or masonry surface).



Connect the power connector to the battery box (F), install the refill and wait for a green light to flash on the E-cab. (See Refill Cartridge Loading for more detail.)



Test the system by passing your hand under the spout (in front of the sensor window) three or four times. The system should prime within 10 activations. If no sound comes from the Pump Pod™, check that all cables and hoses are firmly connected.

## D Wire Management



Drop the cabinet cover down as low as possible.

Coil and tie excess wires up high to ensure proper dispenser function and provide a clean, uncluttered appearance.

## E 3 ft Extender



A 3 ft wire extension is available to add length between the Pump Pod and Refill Cabinet. The wire connections only fit one way. The tubing connector may need to switch sides based on which side is disconnected from the Pump Pod. Ensure all six lines are securely connected.

**Note:** the additional wire length will increase the number of activations required to prime the system.

## F Refill Cartridge Loading



Open dispenser by pressing release buttons on either side of dispenser and sliding front cover down.



Insert refill. You will hear an audible “click.”

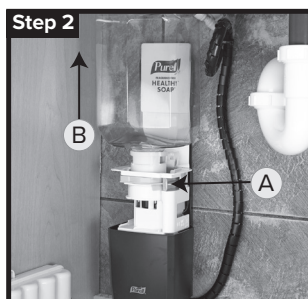


Close dispenser cover. The LED light will blink green 3 times to indicate the refill is accepted and the cabinet is fully closed.

## G Refill Cartridge Removal

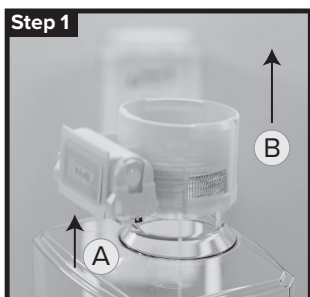


Open dispenser by pressing release buttons on either side of dispenser and sliding front cover down.

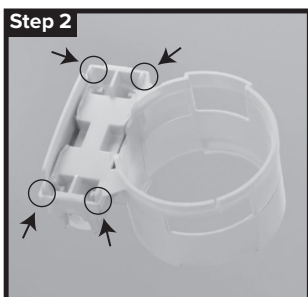


(A) Press green release latch to remove the refill (B) by pulling it up.

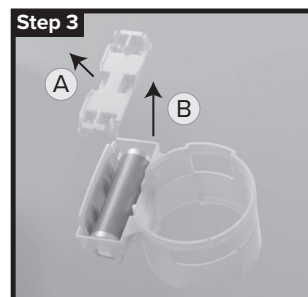
## H Refill Disposal



(A) Grab refill collar from below battery. (B) Pull straight upward to remove. Dispose/recycle PET bottle.



Remove the battery cover by depressing the tabs. Note: at least one tab needs to be depressed to remove the battery cover (circled above).



(A) Pull out battery cover, then (B) remove AA battery and dispose in accordance with federal, state, and local regulations.

### Dispenser Status LED (located on the below-counter dispenser cabinet)

**Green Flash** – every 7 seconds = System is fully operational

**Green Flash 3X** – cabinet closed and refill accepted

**Red double flash** – every 4 seconds = out of service (invalid refill)

**No flash** while cabinet is closed = no refill

**Yellow flash** while cabinet is open = low auxiliary battery

**Yellow flash** while cabinet is closed = dead auxiliary battery

**Red/Green** alternating flashes = system fault (replace dispenser)

Rated 6Vdc

Battery-Operated Appliance

Internally Powered

Type B Applied Part

IXPO

Not suitable for use in the presence of a flammable anesthetic

### Warnings

Use dispenser only as directed.

Do not use in areas where dispenser may be exposed to wet environments such as showers or outdoors.

Do not install or use in extreme hot or cold locations.

Dispensed product intended for external use only. Refer to refill for actions in case of ingestion.

### Cleaning and Maintenance

Clean exterior surfaces of the dispenser using warm water and mild soap.

DO NOT USE ABRASIVE CLEANERS.

Dry with a soft cloth.

### Troubleshooting

No dispensing, motor does not run:

- Hands are not directly beneath sensor
- No refill is loaded
- Incorrect refill is loaded

No dispensing, motor runs:

- Refill is empty or loaded incorrectly

If these troubleshooting steps do not fix the problem, contact GOJO Global Quality Technical Services (GQTS) at 1-800-321-9647 ext. 6308.



#### Definitions of Symbols



Type B Applied Part



Attention, consult accompanying documents



GOJO Industries, Inc.  
One GOJO Plaza, Suite 500  
P.O. Box 991 • Akron, OH 44309-0991  
Tel: 1-330-255-6000 • Toll-free: 1-800-321-9647  
Fax: 1-800-FAX-GOJO